



STAY-COOL WICKING
 LAYERABLE WARMTH
 STRETCH
 FLATLOCK SEAMS FOR COMFORT
 REFLECTIVE DETAILS

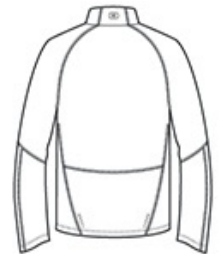
- 6.7-ounce, 91/9 poly/spandex jersey with stay-cool wicking technology
- Lightly brushed interior
- Reflective OGIO Endurance heat transfer label for tag-free comfort
- Zip-through cadet collar with molded cord pull
- Reflective O heat transfer at back neck
- Raglan sleeves with shaped cuffs
- Drop tail hem with reflective stacked O heat transfers at lower back panels
- Reflective O Endurance heat transfer at front left hem

CARE INSTRUCTIONS

Machine wash cold with like colors. Do not bleach. Tumble dry low. Cool iron. Do not use fabric softener. Do not dry clean.



front



back

HOW TO MEASURE



CHEST WIDTH

Measure under the arm and around the fullest part of the chest with arms down, keeping tape horizontal.

SIZE CHART

	XS	S	M	L	XL	2XL	3XL	4XL
Chest	32-34	35-37	38-40	41-43	44-46	47-49	50-53	54-57

COLOR INFORMATION



Blacktop
 PMS NTR BLACK
 C



Electric Blue
 PMS 2145C



Gear Grey
 PMS 425C