

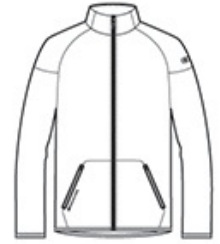


COTTON-RICH SOFTNESS
 STAY-COOL WICKING
 LAYERABLE WARMTH

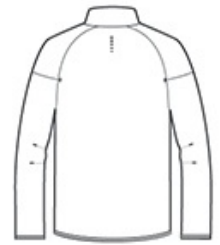
- 8.1-ounce, 64/36 cotton/poly flatback knit
- OGIO Endurance heat transfer label for tag-free comfort
- Zip-through collar
- Exposed coil zipper with molded cord pull
- Stacked O heat transfers at center back
- Welded front zippered pockets with locking pulls
- O Endurance heat transfer at right pocket
- Raglan sleeves with welded, articulated elbows
- O heat transfer at upper left sleeve
- OGIO binding at cuffs and hem
- Slight drop tail hem

CARE INSTRUCTIONS

Machine wash cold with like colors. Remove promptly. Only non chlorine bleach when needed. Tumble dry low. Cool iron if needed. Do not dry clean



front



back

HOW TO MEASURE



CHEST WIDTH

Measure under the arm and around the fullest part of the chest with arms down, keeping tape horizontal.

SIZE CHART

	XS	S	M	L	XL	2XL	3XL	4XL
Chest	32-34	35-37	38-40	41-43	44-46	47-49	50-53	54-57

COLOR INFORMATION



Aluminum Grey
 PMS COOL GRAY
 8C



Blacktop
 PMS NTR BLACK
 C