



Carhartt® Sherpa-Lined Mock Neck Vest CT104277

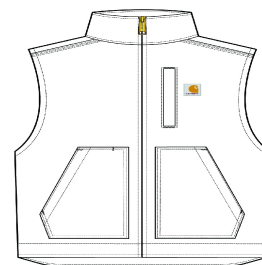


When you need that extra layer out in the field, this warm, sherpa-lined vest is the one to keep handy.

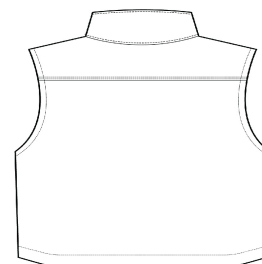
- 12-ounce, 100% ring spun cotton washed duck
- Sherpa-lined body for warmth
- Left chest pocket with zipper closure
- Two interior pockets
- Two large, sherpa-lined handwarming front pockets
- Drop tail hem for added coverage
- Carhartt-strong, triple-stitched main seams for added durability
- Carhartt label sewn on left pocket
- Loose fit

CARE INSTRUCTIONS

Machine Wash Warm Separately. Do Not Bleach. Tumble Dry Low. Do Not Iron Ornamentation. Steam Iron Shell Only.

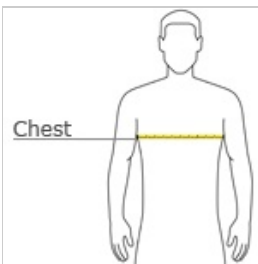


front



back

HOW TO MEASURE



CHEST WIDTH

Measure under the arm and around the fullest part of the chest with arms down, keeping tape horizontal.

SIZE CHART

	S	M	L	XL	2XL	3XL	4XL	5XL
Chest	34-36	38-40	42-44	46-48	50-52	54-56	58-60	62-64

COLOR INFORMATION



Black
PMS NTR BLACK
C



Carhartt Brown
PMS 463C



Gravel
PMS 11C