

Eddie Bauer

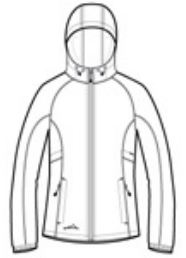
## Ladies Packable Wind Jacket. EB501



Wind was the inspiration for this compact layer. Plus, it packs down into its own logoed pocket, making it easy to carry wherever you go. Hood with locking drawcords for adjustability, contrast reverse coil zipper, underarm vents, front zippered pockets with packable right pocket, elastic cuffs and an open hem. Contrast Eddie Bauer logo on right hem. Made of 100% nylon.

### CARE INSTRUCTIONS

Secure all garment before laundering Machine wash warm delicate separately Use mild detergent rinse throughly Do not bleach Tumble dry low or for best result line dry Do not iron. Do not dry clean

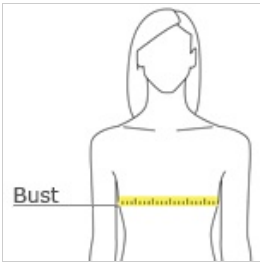


front



back

### HOW TO MEASURE



#### BUST

Measure under the arm and around the fullest part of the bust with arms down, keeping tape horizontal.

### SIZE CHART

|      | XS    | S     | M     | L     | XL    | 2XL   | 3XL   | 4XL   |
|------|-------|-------|-------|-------|-------|-------|-------|-------|
| Size | 2     | 4/6   | 8/10  | 12/14 | 16/18 | 20/22 | 24/26 | 28/30 |
| Bust | 32-33 | 34-35 | 36-37 | 38-40 | 41-43 | 44-46 | 47-49 | 50-52 |

### COLOR INFORMATION



Adriatic Blue  
PMS 2377C



Black  
PMS NTR BLACK  
C



Grey Steel  
PMS 7540C